

PYMATUNING STATE PARK

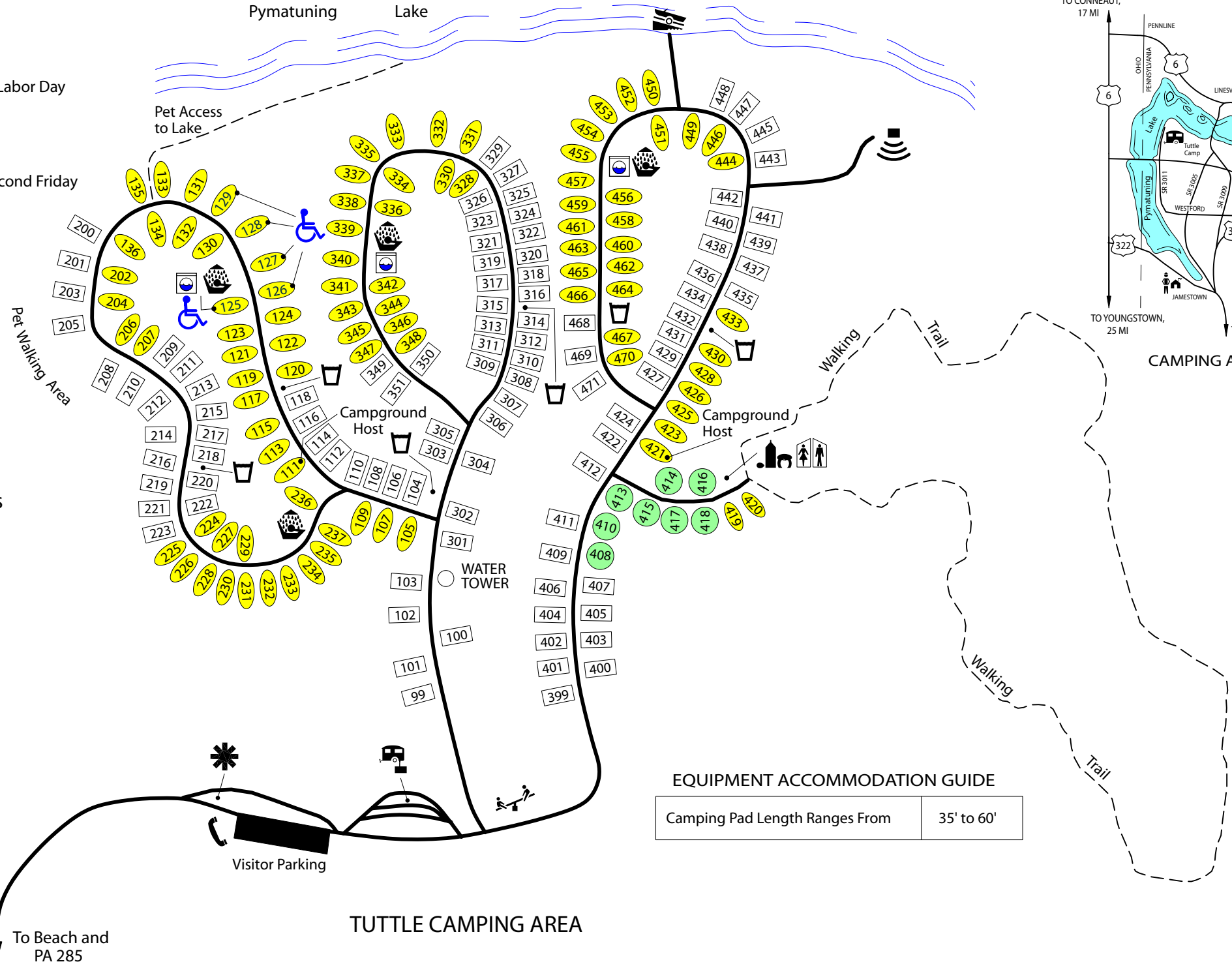
2660 Williamsfield Road
 Jamestown, PA 16134-0425
 Phone: 724-932-3142 - Park Office
 724-927-2986 - Camp Booth-Memorial Day-Labor Day
 Make online reservations at
www.visitPAparks.com
 or call toll-free 888-PA-PARKS

Approximate camping season is from the second Friday in April to the last Sunday in September.
 Call to confirm dates.

Pet Camping Sites 111 - 136 & 200 - 237

Campground Host - Site 111 and 421

Pymatuning Lake



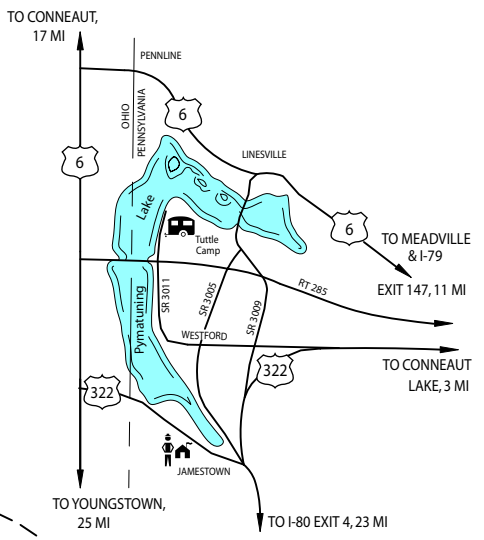
LEGEND

- Park Office
- Contact Station
- Camp Store
- Restrooms
- Showerhouse/Restrooms
- Public Phone
- Camping Area
- Sanitary Dump Station
- Amphitheater
- Water
- Playground
- Accessible
- Boat Launch
- Laundromat
- Non Electric Site
- Electric Sites-30 AMP
- Electric Site-50 AMP

EQUIPMENT ACCOMMODATION GUIDE

Camping Pad Length Ranges From	35' to 60'
--------------------------------	------------

CAMPING AREA LOCATION



To Beach and PA 285

TUTTLE CAMPING AREA

Tuttle Campground

On the shores of Pymatuning Reservoir, Tuttle Campground has modern facilities, including showers and flush toilets. About half of all of the campsites have electricity. There is a boat launch, playground, camp store, sanitary dump station and an amphitheater. The Walking Trail is a loop that begins near the camp store.

Pets

Pets are permitted at specified campsites in this campground. Please contact the park office or contact office for guidelines for pets.

Pets are prohibited in swimming areas and all overnight areas, except the campgrounds involved in the pet program. Guide dogs or other dogs that assist people with disabilities and are controlled by the use of a harness or other restraint are not considered "pets."

Camping Season

Tuttle Campground opens in April and closes in September.

Reserving a Site

Most campsites in Pennsylvania state parks can be reserved 11 months in advance to noon of the day of arrival. If you do not have a reservation and arrive after noon, check at the contact station or near the campground entrance for instructions.

Reservations can be made using MasterCard, VISA, American Express and Discover credit cards or personal, traveler's and cashier's checks. To confirm the reservation, full payment must be received within two weeks of making the reservation.

To reserve a campsite, visit www.visitPAparks.com, or call 888-PA-PARKS, Monday to Saturday, 7 a.m. to 5 p.m. except state holidays. The phone number is staffed on Memorial Day, July 4 and Labor Day.

Campsite Issuing

Advance reservations are available for almost all campsites. Unreserved sites are available on a first-come, first-served basis. If an employee is not available, read posted instructions and check the "After Hours Posting Report" then proceed to an available site and set up.

The appropriate fee must be paid to a park employee or deposited in a supplied honor system envelope before setting up on a campsite.

Cancellations and Transfers

Changes to an online reservation must be made

by calling the Pennsylvania State Parks Reservation Center at 888-PA-PARKS, Monday through Saturday, 7 a.m. to 5 p.m. Eastern Time.

Cancellations can be handled via the Internet under "My Account" or by calling the call center. Cancellations made up to the close of business seven days prior to your scheduled arrival date will incur a \$10 cancellation fee. If you cancel six days or less prior to the arrival date, you will forfeit the first night's fee or \$75, whichever is the lesser amount. There is a \$10 fee assessed for all changes made to your reservation, except adding nights to the reservation. Changes to a reservation can be made at the call center, but not via the Internet. Any cancellation or change on the day of arrival must be made through the state park that you have the reservation with.

Access for People with Disabilities

If you need an accommodation to participate in park activities due to a disability, please contact the Pennsylvania Bureau of State Parks: 888-PA-PARKS (voice) 888-537-7294 (TTY) 711 (AT&T Relay Services)

Protect and Preserve Our Campgrounds

Please familiarize yourself and your camping party with the following rules and regulations.

Maximum Camping Period

Campers may stay in state park campgrounds for up to 14 consecutive nights from Memorial Day to Labor Day. Campers may camp for 21 consecutive nights during the remainder of the year.

Maximum Number of People Per Site

Site occupancy is limited to one family unit (persons living under one household) or one non-family unit limited to five persons per site. Anyone renting a campsite must be 18 years of age or older and must be present at the campsite.

Motor Vehicles

Only one car per campsite is allowed unless otherwise posted. Park only in designated areas.

Alcohol

Alcoholic beverages are prohibited in all Pennsylvania state parks.

Check-in/Check-out Time

Check-in time is 3 p.m. on the first day of the rental period. Check-out time is 3 p.m. on the final day. Camping cottages must be vacated by 10 a.m.

Visitors, Quiet Hours and Noise

Visitors are welcome to your campsite from 8 a.m. to 10 p.m. Campers must not disturb the sleep of others between 9 p.m. and 8 a.m. Electric generators that create excessive noise are prohibited.

Fires

Fires are permitted only in provided fireplaces or grills. Gas and propane camp stoves are permitted. Please be careful with fire. Fires must be attended at all times and extinguished before leaving your campsite.

Firewood

Firewood is not provided. Cutting live trees or standing trees and the operation of chainsaws are prohibited.

Firewood Advisory

Firewood may contain non-native insects and plant diseases. Bringing firewood into the park from other areas may accidentally spread pest insects and diseases that threaten park resources and the health of our forests. Even if you are not within a quarantine area, using local firewood is best. Do not take wood home with you and do not leave firewood - Burn It!

Handwashing

Handwashing and dishwashing are permitted only where appropriate facilities are available. Handwashing and dishwashing are prohibited at water spigots, hand pumps, springs, lakes and streams.

Hunting

Firearms and archery equipment may be uncased and ready for use only in authorized hunting areas during hunting seasons. In areas not open to hunting or during non-hunting seasons, firearms and archery equipment must be kept in the owner's car, trailer or camp.

Commonwealth of Pennsylvania
Edward G. Rendell, *Governor*
Department of Conservation and Natural Resources
Michael DiBerardinis, *Secretary*



Pymatuning State Park Tuttle Campground



Modern Camping



Pymatuning State Park

2660 Williams Field Road
Jamestown, PA 16134
724-932-3142

e-mail: pymatuningsp@state.pa.us
www.visitPAparks.com